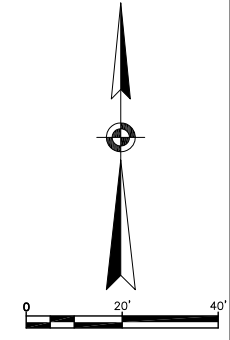
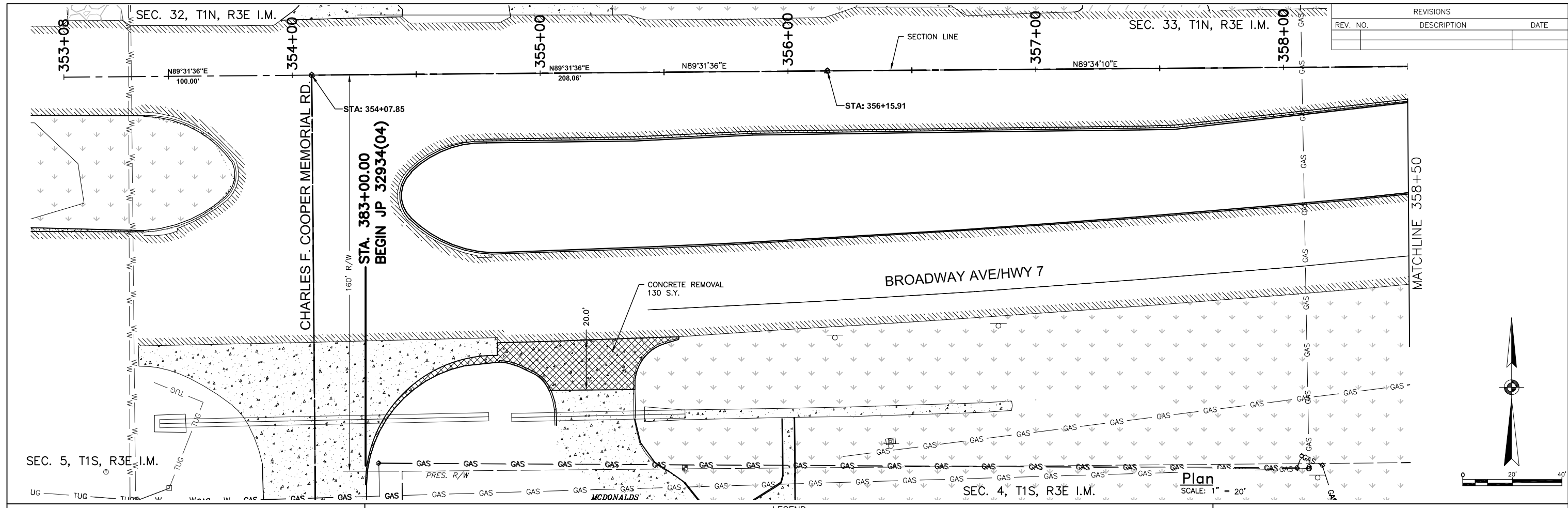
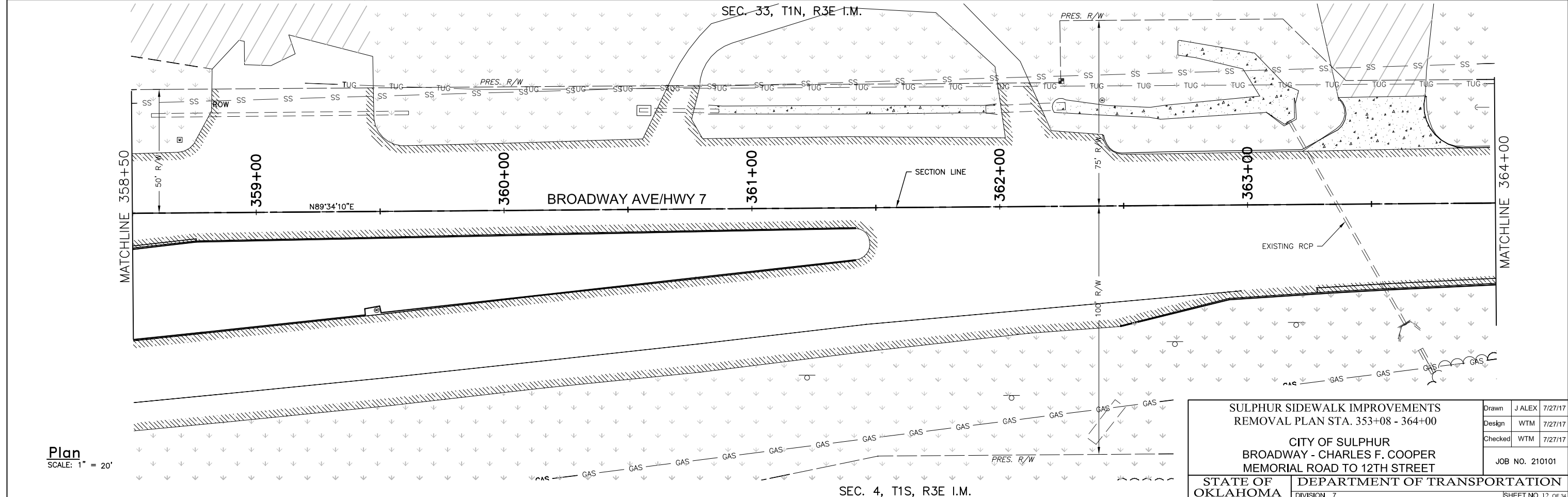


REVISIONS		
REV. NO.	DESCRIPTION	DATE



LEGEND

EXIST. ASPHALT	EXIST. GRASS	EXIST. GRAVEL	EXIST. CONCRETE	CLEAN OUT	POWER POLE	GASOLINE FILL CAP	TELEPHONE PEDESTAL	DRAINAGE INLET	SIGN	GAS METER	VENT PIPE	FLAG POLE	LIGHT POLE	WATER VALVE
BENCH MARK	SANITARY SEWER MH	GAS LINE MARKER	TRAFFIC VAULT	FIRE HYDRANT	SIGNAL VAULT	GUY ANCHOR	WATER METER	STORM SEWER MH	MAIL BOX	YARD HYDRANT	REMOVAL OF ASPHALT	REMOVAL OF CONCRETE		



Plan
SCALE: 1" = 20'

SULPHUR SIDEWALK IMPROVEMENTS REMOVAL PLAN STA. 353+08 - 364+00		Drawn	J ALEX	7/27/17
		Design	WTM	7/27/17
		Checked	WTM	7/27/17
CITY OF SULPHUR BROADWAY - CHARLES F. COOPER MEMORIAL ROAD TO 12TH STREET		JOB NO. 210101		
STATE OF OKLAHOMA	DEPARTMENT OF TRANSPORTATION DIVISION 7	SHEET NO. 12 OF 34		

J:\Sulphur\210101\cadd\2017 Phase 1\210101_REMOVAL_01.dwg, 8/10/2017 10:38:12 AM, Jona, 1:2